



H 302

19 TN/T H 302, 3/4" High Fidelity Dome Tweeter

Chassis: glassfibre reinforced plastic, black.

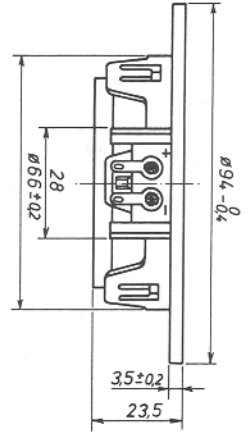
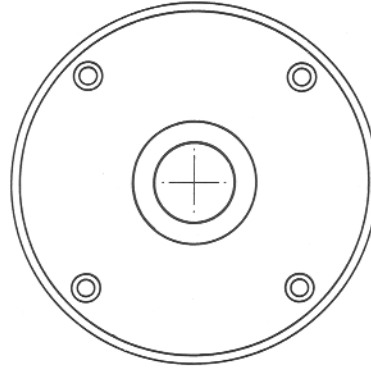
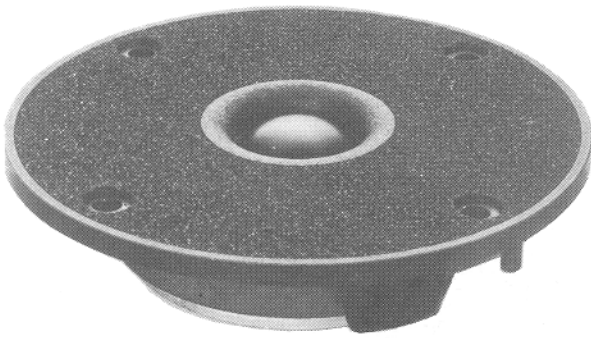
Decoration insert: foam, dark grey.

Diaphragm: soft dome, polyamide, black.

Mounting holes: 4 x 4 mm, equispaced on PCD 77 mm

The H 302 features high efficiency and wide dispersion, the result of moderate horn loading and a small diaphragm which is vacuum formed from a high loss

plastic foil. The unit is ideally suited for application in three and four way systems with a crossover frequency of 4 kHz or higher.



Technical data:

8 ohms

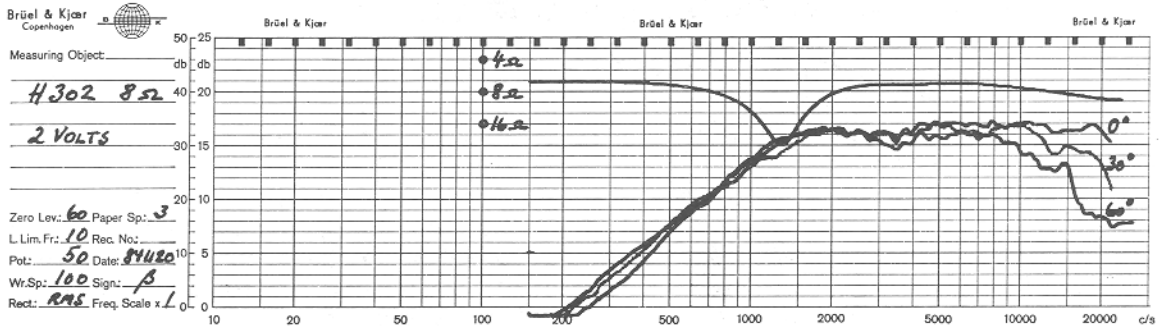
| | | | | | |
|------------------------------------|-------------|--------|--------------------------|------|-----------------|
| Recommended frequency range | 4000-20 000 | Hz | Voice coil resistance: | 6,2 | ohms |
| Nominal power (DIN 45573) | 50 | W 1 | Effective diaphragm area | 4 | cm ² |
| Music power (DIN 45500) | - | W | Moving mass | 0,2 | g |
| Characteristic sensitivity (lm,lw) | 90 | dB SPL | Free air resonance | 1200 | Hz |
| Operating power (DIN 45500): | 4,0 | W | Weight | 0,29 | kg |
| Voice coil diameter | 19,5 | mm | Magnet weight | 0,12 | kg |
| Voice coil height | 1,5 | mm | | | |
| Air gap height | 2,0 | mm | | | |
| Flux density: | 1,4 | T | | | |
| Force factor | 2,6 | Wb/m | | | |

1) Crossover frequency 5000 Hz, 12 dB/oct.

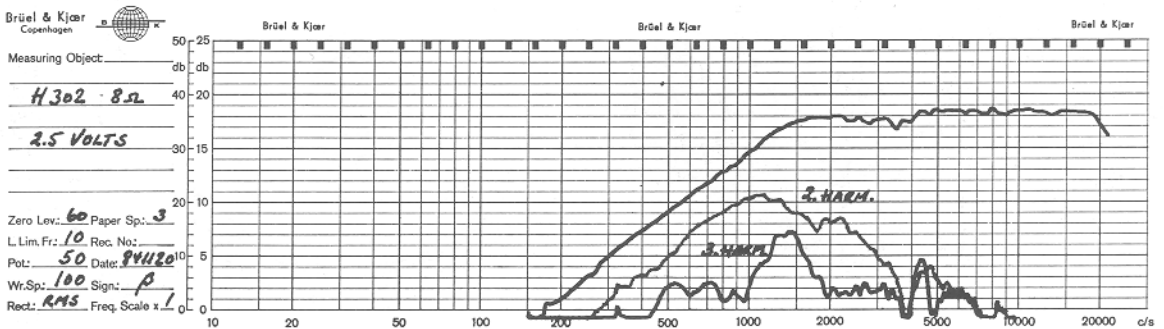
NOTES:

Response curves recorded in anechoic chamber (Free-Field, 4π -radiation) with 0.5 m microphone distance. The loudspeaker is mounted in a 0.6 m by 0.8 m baffle:

A Sound pressure on and off axis, and impedance:

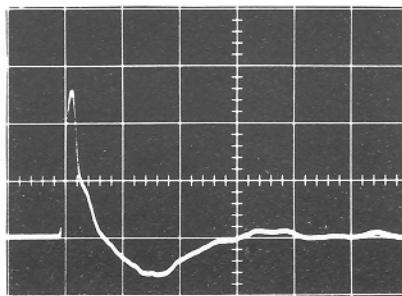


B Sound pressure and distortion on axis. The distortion components are raised by 20 dB:



C Sound pressure response to 4 Volts step function:

Sound pressure
 0.56 Pa/div



0.2 ms/div Time →



Seas Fabrikker a.s
 P.O.Box 600, Høyden, N-1501 Moss, Norway
 Phone +47-32-65 811
 Telex N 18419

Note: New telex no. 78419 SEAS N from June 20. 1985